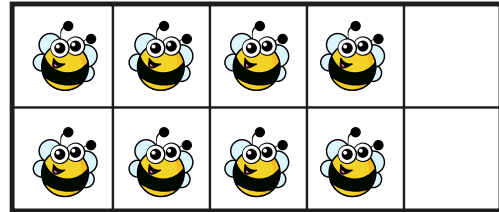
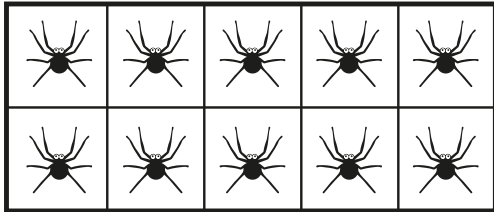
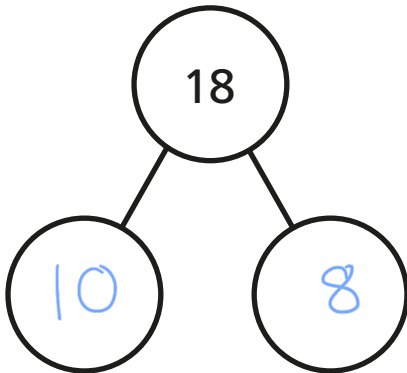


# Related facts

**I** Look at the picture.



Complete the part-whole model and fact family.



$$\boxed{10} + \boxed{8} = 18$$

$$\boxed{8} + \boxed{10} = 18$$

$$18 - \boxed{10} = \boxed{8}$$

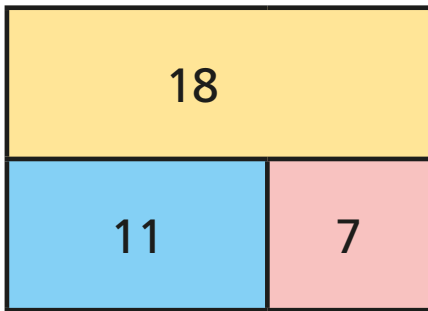
$$18 - \boxed{8} = \boxed{10}$$

Can you write each number sentence a different way?



2 Complete the fact family for each bar model.

a)



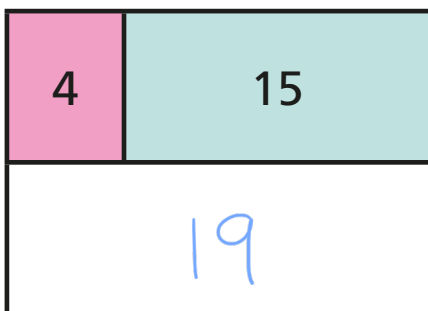
$$11 + 7 = 18$$

$$7 + 11 = 18$$

$$18 - 7 = 11$$

$$18 - 11 = 7$$

b)



$$19 = 4 + 15$$

$$19 = 15 + 4$$

$$15 = 19 - 4$$

$$4 = 19 - 15$$

c) Draw your own bar models.

Ask a partner to write the fact family to match.

